

girl scouts 
of the missouri
heartland

Hickory Knoll: Regrowth

By building a new and improved shelter at Camp Finbrooke, Girl Scouts will be able to safely discover, explore, and strengthen their outdoor skills and commitment to environmental stewardship.



Girls belong in
the outdoors.



Girl Scouts are forces of nature. And they were meant for outdoor adventures. Whether they're swimming in a lake for the first time at summer camp, discovering the wildlife in their own backyards, or being a citizen scientist and observing bees in their local park, every outdoor adventure grows a Girl Scout's "I've got this" attitude. And once they unlock that confidence, they'll aim as high as the stars they see outside their cabin window.

Girl Scouts Get Outdoors

At Girl Scouts she can show off her resilience, hone new skills, and embrace new experiences—all while meeting sisters she'll have for a lifetime. More than ever, girls need Girl Scouts. Research confirms what we've always known. Outdoor experiences are more than fun—they're a guaranteed way to help girls thrive. Help us turn the tide. Support our program to connect more girls to outdoor experiences that will transform their world as they grow.

Through the Outdoor Program pillar of the Girl Scout Leadership Experience, girls see the Earth as their home. Whether she is learning about endangered wildlife, developing creative recycling projects, or working an exciting badge, her focus will be on care, conservation, and responsibility. She will be the reason that the beauty and wonder of our natural world endures for future generations to enjoy.

When Girl Scouts Get Outdoors

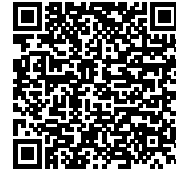
- They discover that they can better solve problems and overcome challenges.
- They develop leadership skills, build social bonds, and are happier overall.
- They become team players and care more about protecting our environment.



The Why

In the spring of 2022, we experienced a fire at Camp Finbrooke—one of four program properties owned and operated by Girl Scouts of the Missouri Heartland. Most importantly—no one was hurt in the fire. Unfortunately, the unit shelter and one cabin of the Hickory Knoll unit were completely destroyed.

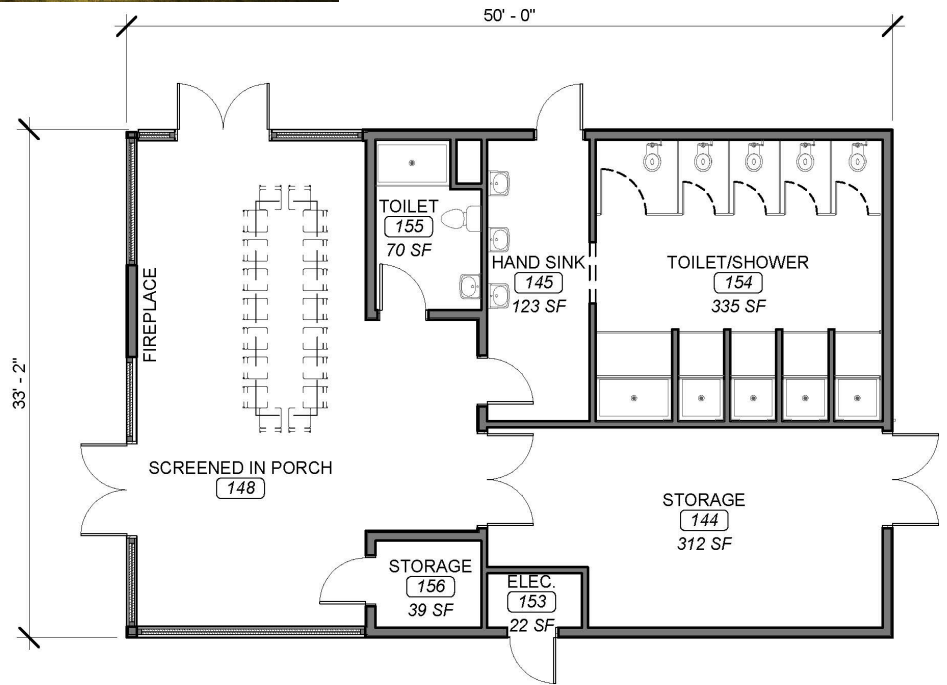
Hickory Knoll was our most advanced campsite, and had been used primarily to house our youngest Girl Scouts. The unit shelter provided showers, toilets, sinks, and a large gathering area that could be used to gather, cook meals, earn badges, and seek shelter during rain storms.



Contact our team today—
donate@girlscoutsmoheartland.org
 877-312-4764

The Now

Girl Scouts always try to look on the bright side—and this has given us the opportunity to think about how we can best serve today’s Girl Scouts, their troops, and their families. A new unit shelter has been thoughtfully designed—ready to take on new adventures and serve generations of future Girl Scouts!

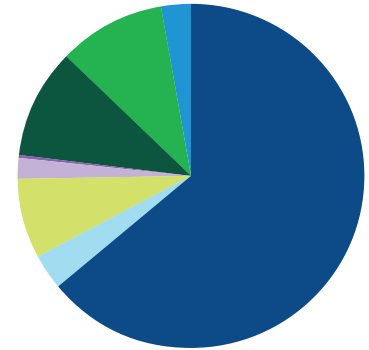


About Finbrooke Program Center

A spectacular camp tucked away in Christian County, nestled on 250 acres of land. Finbrooke offers a lodge that can house up to 125 people, a troop house that sleeps 12, and includes a kitchen, and four camping units to choose from for day or overnight usage. Additionally, Finbrooke offers Gloria’s Pavilion and Collier’s Circle for day usage. This program center is accredited by the American Camp Association and is ADA accessible.



By partnering with us to support our outdoor pillar, you will be poised to continue the rich outdoor history of the Girl Scout Movement and the legacy of the Ozarks.



Financials

Construction Costs	\$480,000
Site Survey	\$5,000
Soil Borings and Geotechnical Report	\$20,000
Prelim Architect Fees	\$7,500
Architect and Engineer's Fees	\$48,000
Drawing Reproduction	\$1,000
Testing and Inspections	\$15,000
Advertisement of Bids	\$1,500
Furnishings and Appliances	\$77,800
Maintenance Fund	\$75,000
Contingencies	\$19,200
Goal	\$750,000

We Are Committed

Girl Scouts can step outside through our summer experiences or participate in programs that feature archery, high adventure, fishing, and canoeing. No matter how they want to explore—we provide the tools they need.

Give to our effort for Hickory Regrowth today! Naming rights are available—we'd be happy to discuss a gift to secure naming rights. Reach out to our team to arrange a conversation with our CEO to imagine the possibilities.


Giving Levels

 **Champion**
\$100,000

Be the hero behind Hickory Knoll's rebirth.

 **Changemaker**
\$75,000

Transform Hickory Knoll for girls for generations to come.

 **Pioneer**
\$50,000


Your bold spirit ignites Hickory Knoll's renewal.

 **Pathfinder**
\$25,000

Lead the way to a restored Camp Finbrooke.

 **Conservator**
\$10,000

Safeguard cherished memories at Camp Finbrooke.

 **Friend**
\$5,000

Bring warmth and hope to Camp Finbrooke's future.

Contact our team today—
donate@girlscoutsmoheartland.org
 877-312-4764

